

Education

[Life in Hamilton County - Table of Contents -Home](#)

[Enrollment](#)

[Performance](#)

[Adult Education](#)

[Public School Expenditures](#)

Education - Enrollment Index

[Education Index](#) | [Life in Hamilton County - Table of Contents](#) | [Home](#)

[Total Primary Enrollment in Public Schools](#)

[Total Secondary Enrollment in Public Schools](#)

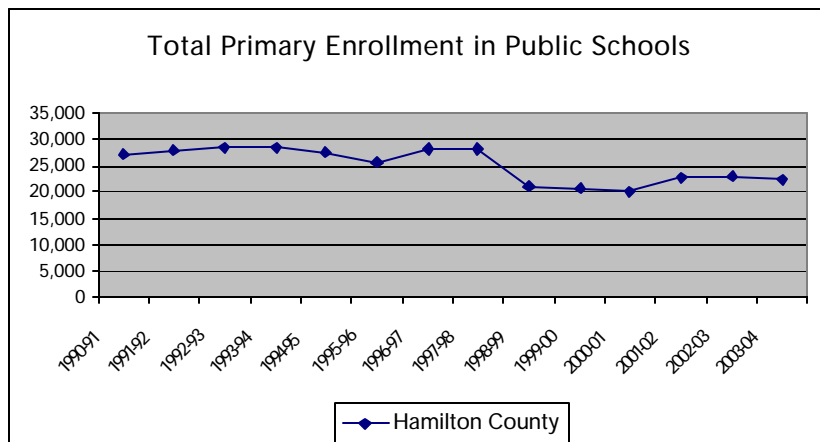
[Total Private Enrollment in Hamilton County](#)

Education - Enrollment

Indicator - Total Primary Enrollment in Public Schools

Trend	Between the 1990-91 and 2002-04 school years, primary enrollment in public schools declined 17.8%.
Comparison	In 2000-03, 505,244 students in grades K-6 were enrolled in public schools in the state.
Discussion	Enrollment figures reflect tenth day enrollment. This measure includes grades K –6.

Year	Hamilton County
1990-91	27,234
1991-92	27,981
1992-93	28,636
1993-94	28,538
1994-95	27,620
1995-96	25,496
1996-97	28,139
1997-98	28,139
1998-99	21,026
1999-00	20,604
2000-01	20,076
2002-03	22,905
2003-04	22,382

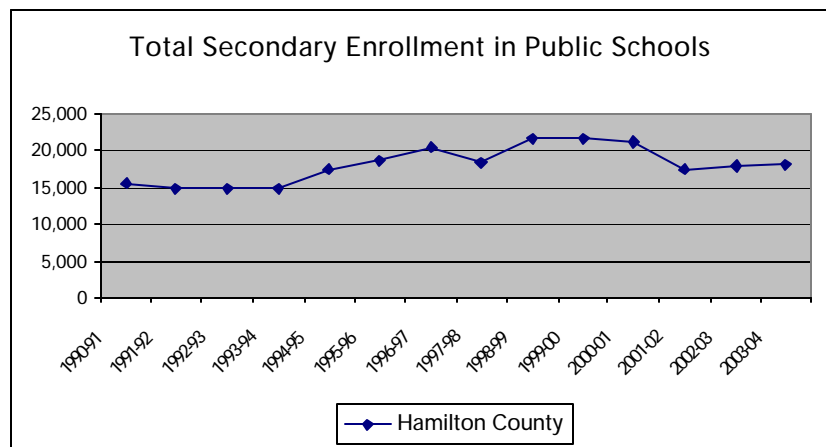


Source: Hamilton County Department of Education, Tennessee Department of Education

Indicator - Total Secondary Enrollment in Public Schools

Trend	Between the 1990-91 and the 2003-04 school years, secondary enrollment in public schools increased 16.8%.
Comparison	In 2002-03, 444,271 students in grades 7-12 were enrolled in public schools in the state.
Discussion	<p>Enrollment figures reflect tenth day enrollment. For this measure, secondary enrollment includes grades 7-12.</p> <p>Enrollment in primary schools is historically larger than enrollment in secondary schools primarily because children can legally begin to drop out of school in the tenth grade.</p>

Year	Hamilton County
1990-91	15,565
1991-92	15,052
1992-93	15,042
1993-94	14,928
1994-95	17,502
1995-96	18,717
1996-97	20,499
1997-98	18,572
1998-99	21,747
1999-00	21,622
2000-01	21,301
2001-02	17,617
2002-03	18,010
2003-04	18,186

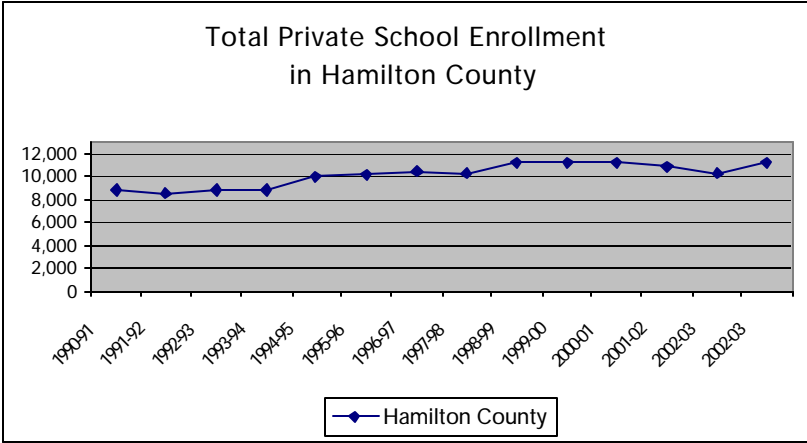


Source: Hamilton County Department of Education, Tennessee Department of Education

Indicator - Total Private School Enrollment in Hamilton County

Trend	From the 1990-91 to 2003-04 school years, private school enrollment increased by 25.8%.
Comparison	According to the 2000 Census, 18.3% of Hamilton County students are enrolled in private school. This compares to 10% of students across the state of Tennessee.
Discussion	<p>Students enrolled in private schools include Hamilton County residents as well as residents of surrounding counties. In addition, two local private schools have boarding students.</p> <p>Hamilton County has 33 private schools, and 21 of these have an enrollment of over 100 students.</p> <p>Hamilton County has 52 public elementary schools and 21 private schools that teach “elementary” students. The county also has 17 public middle schools and 17 public high schools, including 2 vocational high schools and 1 alternative high school. Several Hamilton County magnet schools combine grades from more than one school type, for example K-8, K-12, and 6-12. This compares with 24 private schools that teach “middle school” students and 13 that teach “high school” students.</p>

Year	Hamilton County
1990-91	8,896
1991-92	8,590
1992-93	8,904
1993-94	8,868
1994-95	10,044
1995-96	10,215
1996-97	10,548
1997-98	10,319
1998-99	11,221
1999-00	11,218
2000-01	11,243
2001-02	10,914
2002-03	10,350
2003-04	11,191



Source: Community Research Council, Inc.

Education - Performance Index

[Education Index | Life in Hamilton County - Table of Contents | Home](#)

[Fourth Grade Math Median National Percentiles on the TCAP](#)

[Fourth Grade Reading Median National Percentiles on the TCAP](#)

[Eighth Grade Math Median National Percentiles on the TCAP](#)

[Eighth Grade Reading Median National Percentiles on the TCAP](#)

[Percentage of First Time Takers to Pass Both Language and Math Sections of the Competency Test](#)

[Percentage of Students Meeting the Algebra I Competency Requirement While in Grades 9-12](#)

[Percentage of Students Meeting the Biology I Competency Requirement](#)

[Percentage of Students Meeting the English II Competency Requirement](#)

[Average ACT Composite Scores](#)

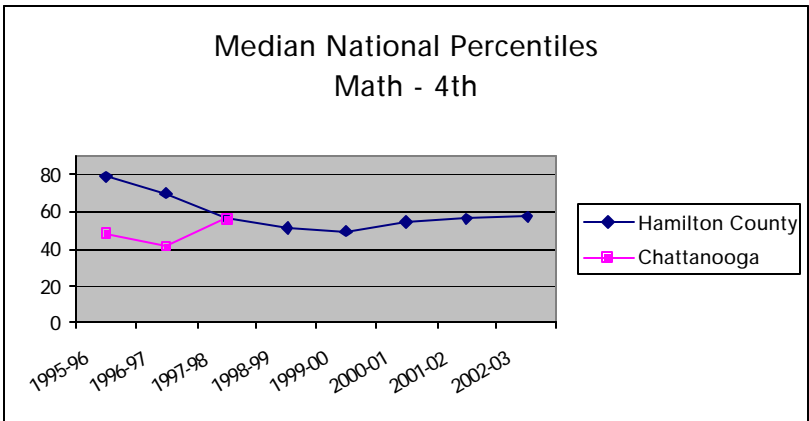
[Dropout Rates in the Public Schools, Ninth through Twelfth Grades](#)

Education - Performance

Indicator- Fourth Grade Math Median National Percentiles on the TCAP

Trend	In 1997-98 the Hamilton County and Chattanooga City Schools Systems merged. Prior to the merger, fourth grade math scores were declining in both systems. Fourth grade math scores declined to the forty-nine percentile two years after the merger. By 2002-2003, the average national percentile increased to 57.
Comparison	In Tennessee, the 2002-2003 median national percentile was 61.
Discussion	<p>TCAP Tennessee Comprehensive Assessment Program. This indicator tracks the math score. TCAP includes a battery of tests that measure reading/language arts, mathematics, science, and social studies.</p> <p>There were two events that may have affected test scores beginning 1997-98. First the Hamilton County and Chattanooga City Schools systems merged. Historically, the City of Chattanooga Schools had lower achievement test scores than the Hamilton County Schools, and the 1997-98 scores reflect the blending of these two systems. In addition, a new bank of test items, known as TerraNova, was included in the TCAP achievement tests. The TerraNova mathematics achievement test involves more problem-solving questions that require greater reading comprehension than in the past. The test uses the most recently available national norms (1996). Whenever new norms are used, it is not unusual for overall scores to temporarily decline.</p> <p>Hamilton County Schools implemented a new math curriculum in the 1999-2000 school year. That year's math scores may reflect the curriculum transition for the system's math scores.</p>

Year	Hamilton County	Chatt. City
1995-96	79	48
1996-97	70	42
1997-98	56	
1998-99	51	
1999-00	49	
2000-01	54	
2001-02	56	
2002-03	57	

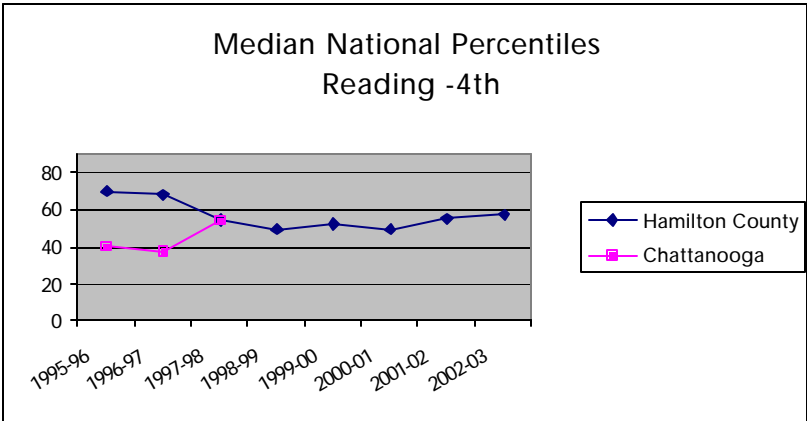


Source: Tennessee Department of Education

Indicator- Fourth Grade Reading Median National Percentiles on the TCAP

Trend	In 1997-98 the Hamilton County and Chattanooga City Schools Systems merged. Prior to the merger, fourth grade reading/language arts scores were flat in both systems. Since the 1997-98 school year, the median national percentile scores for fourth grade fluctuated each year, declining by as much as 9% in some years. At 57, the 2002-2003 National Percentile Score is 5.5% higher than the first year merger score of 54.
Comparison	In Tennessee, the 2001-2002 median national percentile was 57.
Discussion	<p>TCAP Tennessee Comprehensive Assessment Program. This indicator tracks the reading score. TCAP includes a battery of tests that measure reading/language arts, mathematics, science, and social studies.</p> <p>There were two events that may have affected test scores beginning 1997-98. First the Hamilton County and Chattanooga City Schools systems merged. Historically, the City of Chattanooga Schools had lower achievement test scores than the Hamilton County Schools, and the dip in the 1997-98 Hamilton County scores reflect the blending of these two systems. In addition, a new bank of test items, known as TerraNova, was included in the TCAP achievement tests. The TerraNova reading/language subtest uses high quality, authentic literature, and articles form magazines and newspapers to capture student interest. The test uses the most recently available national norms (1996). Whenever new norms are used, it is not unusual for overall scores to temporarily decline.</p>

Year	Hamilton County	Chatt. City
1995-96	70	41
1996-97	68	38
1997-98	54	
1998-99	49	
1999-00	52	
2000-01	49	
2001-02	55	
2002-03	57	

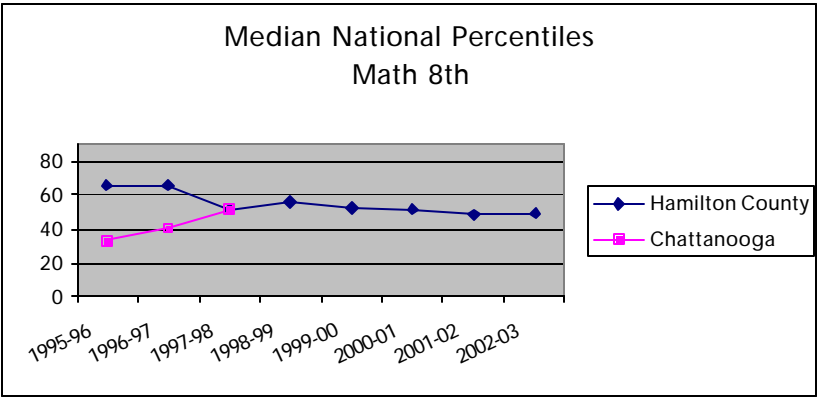


Source: Tennessee Department of Education

Indicator- Eighth Grade Math Median National Percentiles on the TCAP

Trend	In 1997-98 the Hamilton County and Chattanooga City Schools Systems merged. Prior to the merger, eighth grade math scores were flat in county schools and increasing in the city schools. Since the 1997-98 school year, the median national percentile scores increased slightly in 1998-99 and have declined each subsequent year. The average national percentile in 2002-2003 was 49, a 12.5% decline over the 1998-1999 score.
Comparison	In Tennessee, the 2001-2002 median national percentile was 55.
Discussion	<p>TCAP Tennessee Comprehensive Assessment Program. This indicator tracks the math score. TCAP includes a battery of tests that measure reading/language arts, mathematics, science and social studies.</p> <p>There were two events that may have affected test scores beginning 1997-98. First the Hamilton County and Chattanooga City Schools systems merged. Historically, the City of Chattanooga Schools had lower achievement test scores than the Hamilton County Schools, and the dip in the 1997-98 Hamilton County scores reflect the blending of these two systems. In addition, a new bank of test items, known as TerraNova, was included in the TCAP achievement tests. The TerraNova mathematics achievement test involves more problem-solving questions that require greater reading comprehension than in the past. The test uses the most recently available national norms (1996). Whenever new norms are used, it is not unusual for overall scores to temporarily decline.</p> <p>Hamilton County Schools implemented a new math curriculum in the 1999-2000 school year. That year's math scores may reflect the curriculum transition for the system's math scores.</p>

Year	Hamilton County	Chatt. City
1995-96	66	33
1996-97	66	41
1997-98	52	
1998-99	56	
1999-00	53	
2000-01	52	
2001-02	48	
2002-03	49	

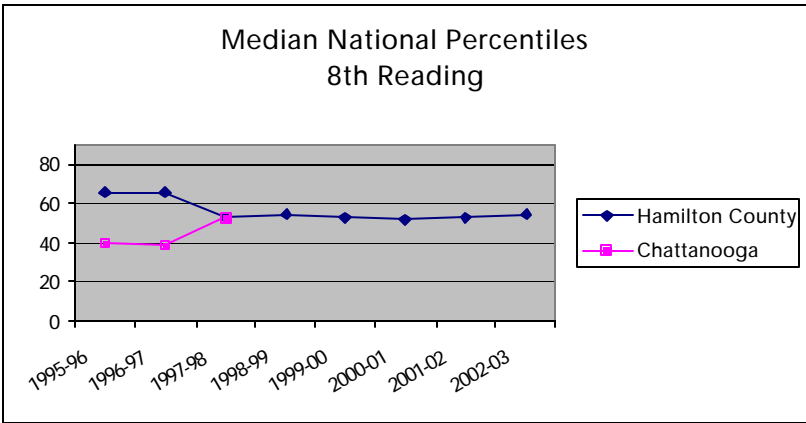


Source: Tennessee Department of Education

Indicator- Eighth Grade Reading Median National Percentiles on the TCAP

Trend	In 1997-98 the Hamilton County and Chattanooga City Schools Systems merged. Prior to the merger, eighth grade math scores were flat in the county schools and increasing in the city schools. Since the 1997-98 school year, the median national percentile scores have remained flat.
Comparison	In Tennessee, the 2001-2002 median national percentile was 55.
Discussion	<p>Discussion TCAP Tennessee Comprehensive Assessment Program. This indicator tracks the reading/language arts score. TCAP includes a battery of tests that measure reading/language arts, mathematics, science and social studies.</p> <p>There were two events that may have affected test scores beginning 1997-98. First the Hamilton County and Chattanooga City Schools systems merged. Historically, the City of Chattanooga Schools had lower achievement test scores than the Hamilton County Schools, and the dip in the 1997-98 Hamilton County scores reflect the blending of these two systems. In addition, a new bank of test items, known as TerraNova, was included in the TCAP achievement tests. The TerraNova reading/language arts subtest uses high quality, authentic literature and articles from magazines and newspapers to capture student interest. The test uses the most recently available national norms (1996). Whenever new norms are used, it is not unusual for overall scores to temporarily decline.</p>

Year	Hamilton County	Chatt. City
1995-96	66	40
1996-97	66	39
1997-98	53	
1998-99	55	
1990-00	53	
2000-01	52	
2001-02	53	
2002-03	55	

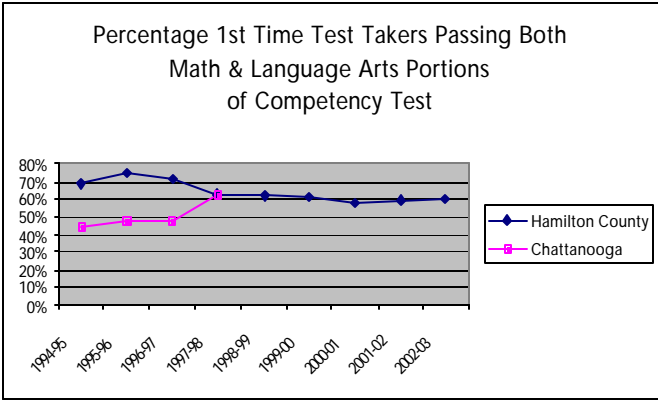


Source: Tennessee Department of Education

Indicator- Percentage of First Time Takers Passing Both Math and Language Arts Portions of the Competency Test

Trend	In 1997-98 the Hamilton County and Chattanooga City Schools Systems merged. Prior to the merger, the percentage of students passing both math and language arts portions of the competency tests was declining in county schools and flat in city schools. Since the 1997-98 school year, the percentage of first time takers passing the math and language arts portions of the test has declined by three percentage points.
Comparison	In Tennessee, 62% of students passed both the math and language arts portions of the competency tests.
Discussion	<p>To receive a regular high school diploma, students must take and pass both a math test and a language arts test. Students are first offered this opportunity in the ninth grade. They may retake the test each year until they graduate. This measure represents the percentage of first time test takers who passed both portions of the test.</p> <p>The goal is that 80% of students will pass the competency tests in language and mathematics as freshmen.</p> <p>In 1997-98 the Hamilton County and Chattanooga City Schools systems merged. Historically, the City of Chattanooga had lower achievement test scores than the Hamilton County Schools, and the dip in the 1997-98 Hamilton County scores reflect the blending of these two systems.</p> <p>Students entering high school for the first time in the fall semester of the 2001-2002 school year and following years will be required to take and pass the Gateway Tests in Mathematics, Science, and Language Arts in order to graduate with a regular diploma.</p>

	Hamilton County	Chatt. City
1994-95	69%	45%
1995-96	75%	47%
1996-97	71%	47%
1997-98	63%	63%
1998-99	62%	
1999-00	61%	
2000-01	58%	
2001-02	59%	
2002-03	60%	

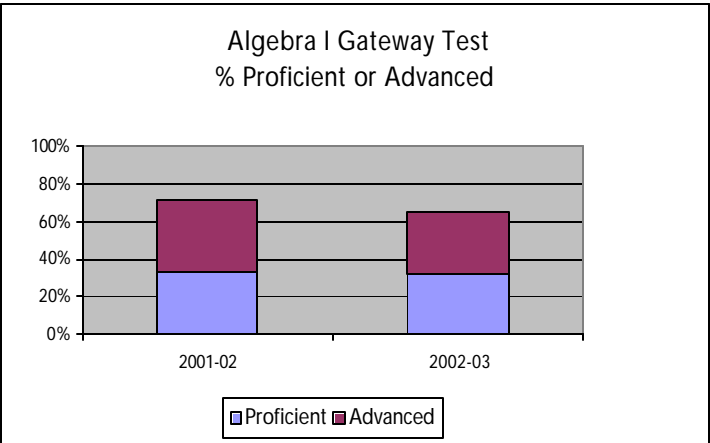


Source: Tennessee Department of Education

Indicator- Percentage of Students Meeting the Algebra I Competency Requirement While in Grades 9-12

Trend	This is the second year the Gateway Test has been administered in Tennessee. The proportion of students taking the Algebra I Gateway Test who met the competency requirement declined by 5.7 percentage points over the previous year.
Comparison	In Tennessee, 75.0% of students taking the Algebra I Gateway Test scored as proficient or advanced.
Discussion	<p>These scores are based only on students taking the Algebra I Gateway in the ninth through twelfth grades. Many students take Algebra I and the Algebra I Gateway test in the 8th grade.</p> <p>Students entering high school for the first time in the fall semester of the 2001-2002 school year and following years will be required to take and pass the Gateway Tests in Mathematics (Algebra I), Science (Biology I), and Language Arts (English II) in order to graduate with a regular diploma. The Gateway tests measure student mastery of high school content standards in mathematics, science, and English. They are first administered to most students when they complete coursework in English II, Algebra I and Biology I. Tennessee students must pass these tests as part of the requirements for earning a high school diploma, beginning with incoming high school freshmen in 2001-02 who will graduate in 2004-05. The requirement applies to all students who intend to graduate with a regular diploma.</p>

Year	Pro-ficient	Ad-vanced	Total Passing
2001-02	32.6%	38.1%	70.7%
2002-03	32.0%	33.0%	65.0%

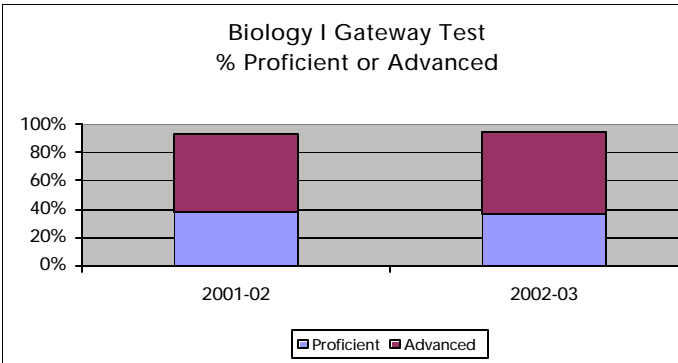


Source: Tennessee Department of Education

Indicator- Percentage of Students Meeting the Biology I Competency Requirement

Trend	This is the second year the Gateway Test has been administered in Tennessee. Ninety-five percent of students taking the Biology I Gateway Exam met the competency requirement.
Comparison	In Tennessee, 95.0% of students taking the Biology I Gateway Test scored as proficient or advanced.
Discussion	Students entering high school for the first time in the fall semester of the 2001-2002 school year and following years will be required to take and pass the Gateway Tests in Mathematics (Algebra I), Science (Biology I), and Language Arts (English II) in order to graduate with a regular diploma. The Gateway tests measure student mastery of high school content standards in mathematics, science, and English. They are first administered to most students when they complete coursework in English II, Algebra I and Biology I. Tennessee students must pass these tests as part of the requirements for earning a high school diploma, beginning with incoming high school freshmen in 2001-02 who will graduate in 2004-05. The requirement applies to all students who intend to graduate with a regular diploma.

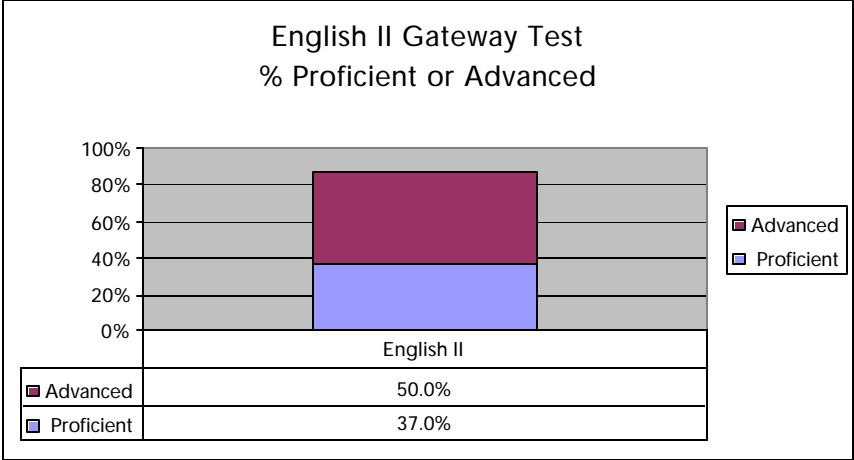
Year	Pro-ficient	Ad-vanced	Total Passing
2001-02	37.3%	55.7%	93.0%
2002-03	37.0%	58.0%	95.0%



Source: Tennessee Department of Education

Indicator- Percentage Students Meeting the English II Competency Requirement

Trend	This is the first year the English II Gateway Test has been administered in Tennessee. Eighty-seven percent of Hamilton County students taking the English II Gateway Test met the competency requirement.
Comparison	In Tennessee, 87.0% of students taking the Biology I Gateway Test scored as proficient or advanced.
Discussion	Students entering high school for the first time in the fall semester of the 2001-2002 school year and following years will be required to take and pass the Gateway Tests in Mathematics (Algebra I), Science (Biology I), and Language Arts (English II) in order to graduate with a regular diploma. The Gateway tests measure student mastery of high school content standards in mathematics, science, and English. They are first administered to most students when they complete coursework in English II, Algebra I and Biology I. Tennessee students must pass these tests as part of the requirements for earning a high school diploma, beginning with incoming high school freshmen in 2001-02 who will graduate in 2004-05. The requirement applies to all students who intend to graduate with a regular diploma.



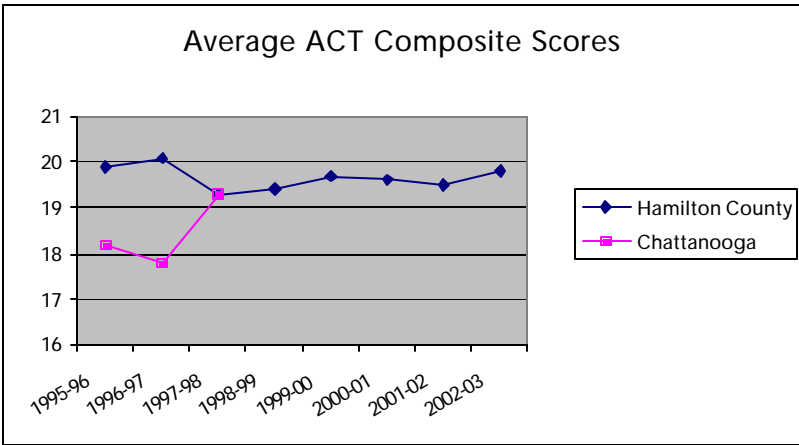
Source: Tennessee Department of Education

Education - Performance

Indicator - Average ACT Composite Scores

Trend	In 1997-98 the Hamilton County and Chattanooga City Schools Systems merged. Since the merger, composite ACT scores have remained relatively flat.
Comparison	For Tennessee, the composite ACT score for 2002-03 was 20.1 .
Discussion	ACT: American College Test ACT scores can range from 1 to 36. The composite score is a blend of English, Mathematics, Reading, and Science Reasoning scores.

Year	Hamilton County	Chattanooga City
1995-96	19.9	18.2
1996-97	20.1	17.8
1997-98	19.3	
1998-99	19.4	
1999-00	19.7	
2000-01	19.6	
2001-02	19.5	
2002-03	19.8	

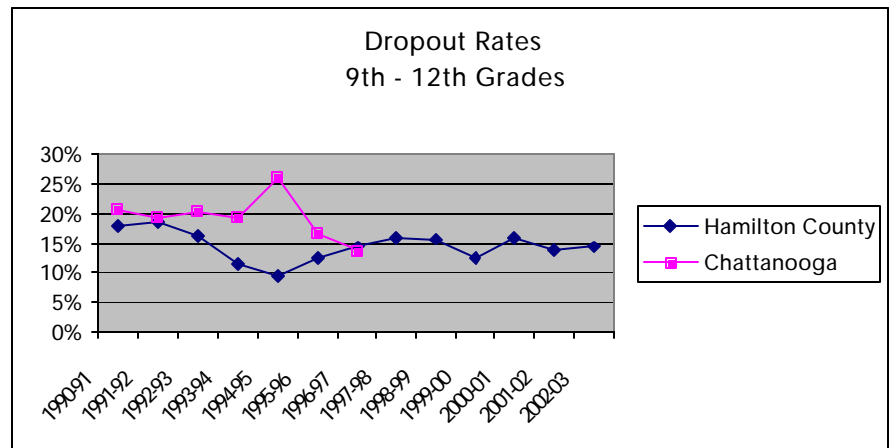


Source: Tennessee Department of Education

Indicator - Dropout Rates in the Public Schools, Ninth through Twelfth Grades

Trend	In the 2002-03 school year, dropout rates increased by about 0.7 percentage points.
Comparison	The dropout rate for the state in 2002-03 was 11.3%
Discussion	<p>Dropout Rate: The percentage of students enrolled in ninth grade but not graduating four years later. It approximates the percentage of high school students who do not complete high school on time.</p> <p>This rate can be viewed as a “survival” dropout rate. It reflects the holding power for grades 9-12 and represents cohorts, not individual tracking of students. It may overestimate the number of students lost to the system since it does not count those students who obtain GED’s or take more than four years to graduate. It also does not directly take into account the immigration and out-migration of students.</p> <p>According to the 2000 U.S. Census, in Hamilton County, 39,964 or 19.2% of persons 25 years or over do not have a high school diploma or equivalency. In the state, this number is 901,684 or 24.1%.</p>

Year	Hamilton County	Chattanooga
1990-91	17.9%	20.6%
1991-92	18.6%	19.4%
1992-93	16.2%	20.2%
1993-94	11.3%	19.5%
1994-95	9.4%	26.0%
1995-96	12.5%	16.7%
1996-97	14.4%	13.6%
1997-98	15.9%	
1998-99	15.8%	
1999-00	12.2%	
2000-01	15.9%	
2001-02	13.6%	
2002-03	14.3%	



Source: Tennessee Department of Education

Education - Adult Education Index

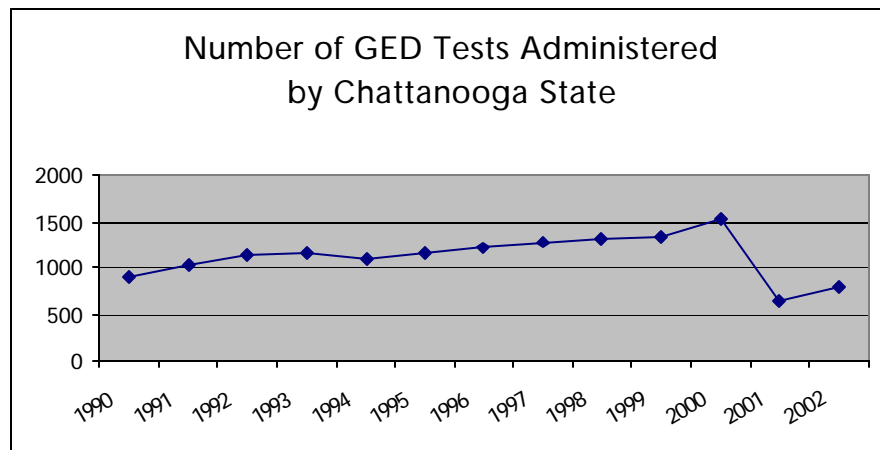
[Education Index | Life in Hamilton County - Table of Contents | Home](#)
[Number of GED Tests Administered Annually at Chattanooga State](#)
[Number of GED's Awarded Annually by Chattanooga State](#)

Education - Adult Education

Indicator - Number of GED Tests Administered Annually at Chattanooga State

Trend	The number of GED tests administered in 2002 increased by 2.4% over 2001. There was a sharp decline in the number of GED tests awarded starting in 2001 (see discussion).
Comparison	According to the 2000 U.S. Census, in Hamilton County, 39,964 or 19.3% of persons 25 years or over do not have a high school diploma or equivalency. In the state, this number is 901,684 or 24.1%.
Discussion	<p>GED: General Education Degree. This degree is the equivalent of the minimum requirements needed to receive a high school diploma.</p> <p>The GED test was revised in 2001, and no tests were administered between January 1 and February 27. Potential test takers were slow to embrace the new test, further decreasing the number of tests given. Chattanooga State anticipates that the number of people taking the GED test will increase once these issues are resolved.</p>

Year	Number Tested
1990	899
1991	1,014
1992	1,119
1993	1,151
1994	1,085
1995	1,158
1996	1,219
1997	1,275
1998	1,325
1999	1,334
2000	1,524
2001	630
2002	785

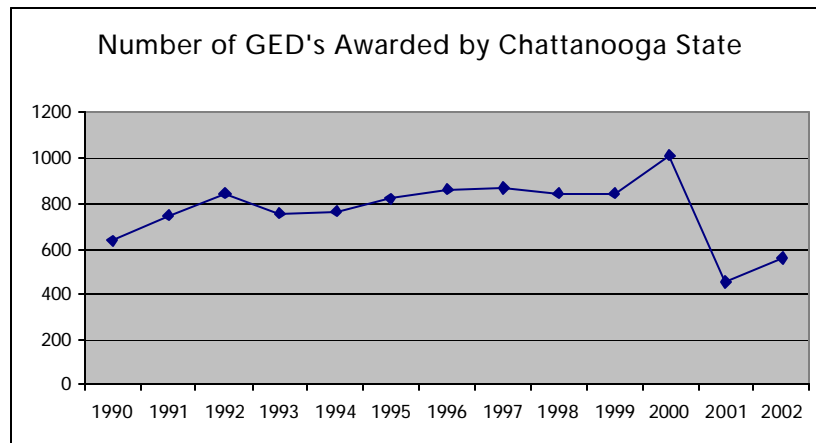


Source: Chattanooga State GED Testing Center

Indicator - Number of GED's Awarded Annually by Chattanooga State

Trend	The number of GED's awarded by Chattanooga State in 2002 increased 23.0% over 2001. There was a sharp decline in the number of GED tests awarded starting in 2001 (see discussion).
Comparison	According to the 2000 U.S. Census, in Hamilton County, 39,964 or 19.3% of persons 25 years or over do not have a high school diploma or equivalency. In the state, this number is 901,684 or 24.1%.
Discussion	<p>GED: General Education Degree. This degree is the equivalent of the minimum requirements needed to receive a high school diploma.</p> <p>The GED test was revised in 2001, and no tests were administered between January 1 and February 27. Potential test takers were slow to embrace the new test, further decreasing the number of tests given. Chattanooga State anticipates that the number of people taking the GED test will increase once these issues are resolved.</p>

Year	Number Awarded
1990	637
1991	747
1992	849
1993	754
1994	764
1995	825
1996	863
1997	871
1998	846
1999	849
2000	1,011
2001	453
2002	557



Source: Chattanooga State GED Testing Center

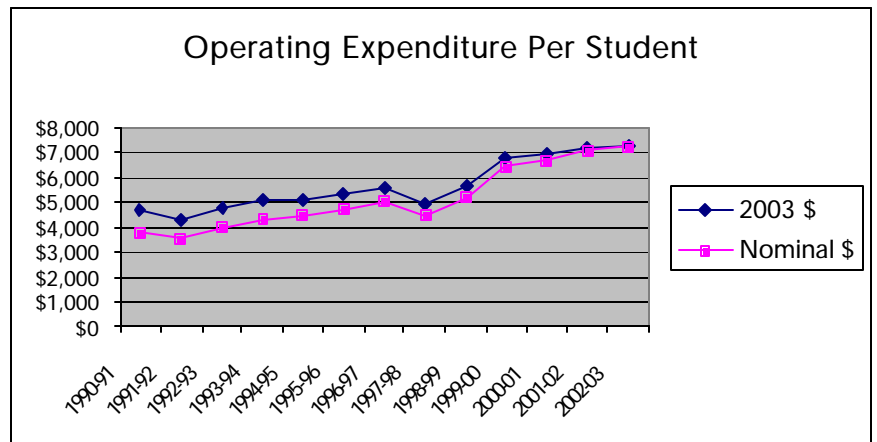
Education - Public School Expenditures

[Education Index](#) | [Life in Hamilton County - Table of Contents](#) | [Home](#)

Indicator - Operating Expenditure Per Student in the Hamilton County School District

Trend	With all dollar values stated in 2003 constant dollars, operating expenditure per student rose by 52.7% from 1990-91 to 2002-03.
Comparison	For the 2002-03 school year, Tennessee spent \$6,648 per pupil. The national per pupil expenditure was \$8.383.
Discussion	<p>Operating Expenditure Per Student: The amount spent per pupil in average daily membership excluding adult programs, community services, pupil activities, capital outlay, and debt service.</p> <p>Expenditure figures have been adjusted to 2003 constant dollars using the "Implicit Price Deflator: Government Purchases/State and Local" from the U.S. Department of Commerce, Bureau of Economic Analysis.</p> <p>The figures for this indicator are reported in the state's 21st Century Schools Report Card.</p>

Year	2003 \$	Ham. Cty. Nominal \$
1990-91	\$4,734	\$3,750
1991-92	\$4,309	\$3,512
1992-93	\$4,817	\$4,017
1993-94	\$5,107	\$4,348
1994-95	\$5,124	\$4,456
1995-96	\$5,302	\$4,710
1996-97	\$5,560	\$5,023
1997-98	\$4,923	\$4,487
1998-99	\$5,615	\$5,203
1999-00	\$6,781	\$6,440
2000-01	\$6,912	\$6,696
2001-02	\$7,161	\$7,034
2002-03	\$7,229	\$7,229

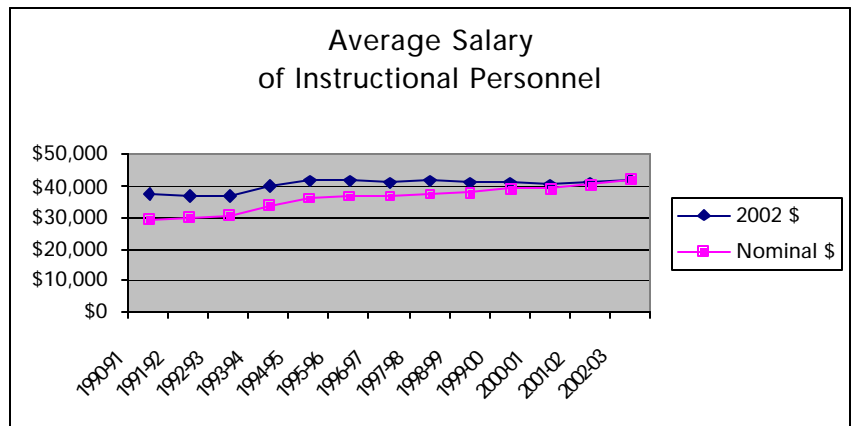


Source: Tennessee Department of Education

Indicator: Average Instructional Personnel Salary in the Hamilton County School District

Trend	With all dollar values state in 2003 constant dollars, average instructional personnel salary in the Hamilton County School District has risen by 13.5% in the last twelve years.
Comparison	For the 2002-03 school year, Tennessee paid instructional personnel an average of \$40,801 per year.
Discussion	<p>Instructional personnel consist of all staff working with students, including classroom teachers, principals, guidance counselors, etc. The average classroom teacher salary in Hamilton County was \$39,920 for the 2002-03 school year.</p> <p>Salary figures have been adjusted to 2003 constant dollars using the "Implicit Price Deflator: Government Purchases/State and Local" from the U.S. Department of commerce, Bureau of Economic Analysis.</p> <p>Increases and decreases in average salary do not necessarily reflect increases or decreases in an individual teacher's pay. Instead, a faculty comprised of primarily experienced teachers might show a higher system average salary, while a faculty comprised of significantly more inexperienced teachers might show a lower system average salary.</p>

Year	2003 \$	Hamilton County Nominal \$
1990-91	\$37,395	\$29,622
1991-92	\$36,870	\$30,050
1992-93	\$36,523	\$30,454
1993-94	\$39,851	\$33,929
1994-95	\$41,834	\$36,381
1995-96	\$41,407	\$36,785
1996-97	\$40,728	\$36,792
1997-98	\$41,278	\$37,624
1998-99	\$41,221	\$38,196
1999-00	\$41,076	\$39,008
2000-01	\$40,578	\$39,320
2001-02	\$40,907	\$40,179
2002-03	\$42,433	\$23,433



Source: Tennessee Department of Education